

ALaman

الأمان لصناعة معدات مكافحة الحريق ذ م م
AL AMAN FIRE FIGHTING EQUIPMENT MANUFACTURING LLC



www.amanfire.com



BUILT ON POWER PROVEN UNDER PRESSURE

www.amanfire.com

AL AMAN FIRE FIGHTING EQUIPMENT MANUFACTURING LLC

Based in Dubai and serving the UAE and Middle East markets. The company commenced operations in **2007** and had become one of the leading fire fighting equipment manufacturer and supplier in the industry.

Our mission is to provide our clients a range of world-class high-quality innovative products supported by knowledgeable staff. We take pride in our expertise, our customer centric services and our experience.

Our diverse certified fire safety and firefighting products are recognized for their robustness, total reliability and comply to the highest standards in compliance with the Civil Defence authorities and international regulatory bodies.

OUR QUALITY POLICY

To deliver high quality and innovative fire protection solutions using world class manufacturing process with the finest engineering technology.

At Al Aman, we are committed towards continuous improvement with the aim to exceed customer requirements and expectations. We are NFPA Compliant as well as ISO 9001, ISO 45001 and ISO 14001 certified..

Testing Facility And Assembly Line Al Aman has established a fully equipped UL Pump Testing facility with advance testing and calibration devices that enable to accurately inspect and test the operation of each Centrifugal Stationery Fire Pump to the required level of compliance standard as per UL 448. The Fire Pumps then undergo various processes in our modern well organized manufacturing and assembly line.

Before delivering to our customers, each pump undergoes necessary inspection, tests and production control, during the assembly process, for which all records are maintained.

OUR STRENGTH



Our Operational Excellence & Planning
ISO 9001 certified



Our Rigorous Testing & Accreditations
UL, FM compliant



Our Partners
Reliable and world renowned



Our Focus on Innovation and Research to Improve



Our People
Our leadership and highly skilled engineers and work force



Our Proven Track Record
Our experience of over 15 years

OUR APPROVAL



TABLE OF CONTENT

OUR PRODUCTS

<p>HORIZONTAL END-SUCTION FIRE PUMPS 50hz</p> <p>06 </p>	<p>HORIZONTAL END-SUCTION FIRE PUMPS 60hz</p> <p>07 </p>	<p>HORIZONTAL SPLIT-CASE</p> <p>08 </p>	<p>VERTICAL TURBINE CENTRIFUGAL PUMPS</p> <p>09 </p>	<p>MOTOR DRIVEN SKIDS</p> <p>10 </p>
<p>DIESEL DRIVEN SKIDS</p> <p>11 </p>	<p>HORIZONTAL SPLIT CASE DIESEL DRIVEN SKIDS</p> <p>12 </p>	<p>MOTOR HORIZONTAL SPLIT CASE SKIDS</p> <p>13 </p>	<p>DIESEL ENGINE VERTICAL TURBINE</p> <p>14 </p>	<p>PUMP HOUSE</p> <p>15 </p>
<p>FIRE PUMP CONTROLLERS</p> <p>16 </p>	<p>JOCKEY PUMPS</p> <p>17 </p>	<p>PORTABLE EXTINGUISHERS</p> <p>18 </p>	<p>MOBILE EXTINGUISHERS</p> <p>19 </p>	<p>FIRE FIGHTING SINGLE DOOR CABINETS</p> <p>20 </p>
<p>FIRE FIGHTING DOUBLE DOOR CABINETS</p> <p>21 </p>	<p>FIRE HYDRANTS UL</p> <p>22 </p>	<p>FIRE HYDRANTS</p> <p>23 </p>	<p>FOAM TRAILER</p> <p>24 </p>	<p>FOAM CONCENTRATES</p> <p>25 </p>
<p>FOAM MASTER</p> <p>25 </p>	<p>FOAM CHAMBER</p> <p>25 </p>	<p>FOAM CABINET</p> <p>25 </p>	<p>DELUGE VALVES</p> <p>26 </p>	<p>WET ALARM CHECK VALVES (DN80-DN250)</p> <p>26 </p>
<p>SPRINKLERS</p> <p>27 </p>	<p>FIRE FIGHTING HOSE REEL</p> <p>28 </p>	<p>SYNTHETIC FIRE HOSE</p> <p>29 </p>	<p>BREECHING INLET</p> <p>30 </p>	<p>LANDING VALVES</p> <p>30 </p>
<p>BLADDER TANK</p> <p>31 </p>	<p>FIRE PROTECTION VALVES</p> <p>32 </p>	<p>FIRE BLANKET</p> <p>33 </p>	<p>FIRE RESISTANT ALARM CABLE</p> <p>34 </p>	<p>FILLING MACHINES</p> <p>35 </p>

OUR UL TESTING



Al Aman Testing Facility

Al Aman has established a fully equipped UL Pump Testing facility with advance testing and calibration devices that enable to accurately inspect and test the operation of each Centrifugal Stationary Fire Pump to the required level of compliance standard as per UL 448.

The Fire Pumps then undergo intensive testing processes in our State-of-the-art manufacturing and assembly line. Before delivering to our customers, each pump undergoes necessary inspection, tests and production control, during the assembly process, for which all records are maintained.



PERFORMANCE TESTS

Performance curves are plotted through the al aman UL approved pump testing facility (APTF) showing the Efficiency, Brake-Horsepower (kW), and Total Head developed at shutoff, At rated capacity of 150 percent, And at selected intermediate capacities between shutoff and maximum capacities exceeding %150 of rated capacity.

HYDROSTATIC TEST

Each pump is to be tested hydrostatically for not less than 5 minutes, The Testing pressure is double the working pressure of the pump, but in no case less than 250 psi (1724 kPa) to ensure no rupture or leakage through the castings at the test pressure.

IMPELLER BALANCING

The impellers of each pump shall be dynamically balanced to the G6.3 balance quality grade in accordance with the requirements for pump impellers in the Standard for Mechanical Vibration - Balance Quality.



HORIZONTAL END-SUCTION FIRE PUMPS

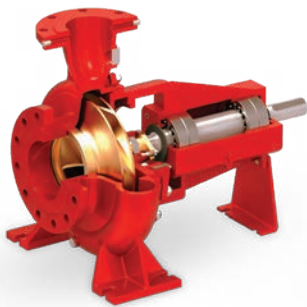
50hz

SL No.	Rated Capacity, US GPM	Size, In.	Model	Pressure Rating, psi	Approx Speed RPM	Maximum Working Pressure Psi
1	50	2.5 x 1.5	EH 2515250	100 - 148	2900	200
2	100	2.5 x 1.5	EH 2515250	97 - 148	2900	200
3	150	2.5 x 1.5	EH 2515250	93 - 146	2900	200
4	200	3 x 2	EH 32250	97 - 138	2900	236
5	200	3 x 2	EH 32250	107 - 148	3000	236
6	250	3 x 2	EH 32250	94 - 135	2900	236
7	250	3 x 2	EH 32250	101 - 145	3000	236
8	250	3 x 2-1/2	AM65-26ES	116 - 139	2900	200
9	250	3 x 2-1/2	AM65-26ES	121 - 144	2950	200
10	300	3 x 2-1/2	AM65-26ES	113 - 136	2900	200
11	300	3 x 2-1/2	AM65-26ES	117 - 141	2950	200
12	300	4 x 2.5	EH 425250	89 - 141	2900	222
13	300	4 x 2.5	EH 425250	96 - 151	3000	222
14	400	4 x 2.5	EH 425250	87 - 139	2900	222
15	400	4 x 2.5	EH 425250	93 - 149	3000	222
16	450	5 x 3	EH 53250	87 - 141	2900	222
17	450	5 x 3	EH 53250	93 - 151	3000	222
18	500	5 x 3	EH 53250	86 - 141	2900	222
19	500	5 x 3	EH 53250	92 - 151	3000	222
20	500	5 x 3	EH 53315	129 - 236	2900	280
21	750	5 x 4	EH 54315	133 - 220	2900	280
22	750	5x4	EHES 54200	84 - 98	3000	200
23	1000	6x4	EHES 64200	70 - 181	3000	200
24	1000	6x4	EH 64315	123-197	2900	210

Al Aman end section fire pumps are designed for 50-Hertz operation in full accordance with UL 448 safety standards, ensuring certified operational safety and reliable performance.

These pump feature an optimized hydraulic design engineered for 50-Hertz operation, delivering high efficiency and improved energy conservation. Built for durability and dependable service and provides consistent performance across a wide variety of demanding applications.

↗ ↘ CAPACITY
↙ ↚ 50 GPM to 1000 GPM



UL LISTED CERTIFIED & APPROVED PUMPS
Compliance to NFPA 20 Design Requirements

HORIZONTAL END-SUCTION FIRE PUMPS

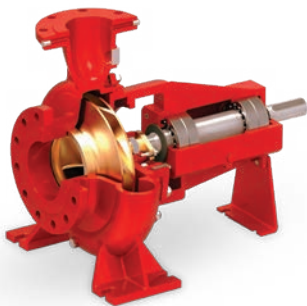
60hz

SL No.	Rated Capacity, US GPM	Size, In.	Model	Pressure Rating, psi	Approx Speed RPM	Maximum Working Pressure Psi
1	300	4X2.5	EHES 425250	125 - 198	3500	225
2	300	4X2.5	EHES 425250	129 - 204	3550	225
3	300	4X2.5	EHES 425250	133 - 210	3600	225
4	400	4X2.5	EHES 425250	123 - 198	3500	225
5	400	4X2.5	EHES 425250	126 - 204	3550	225
6	400	4X2.5	EHES 425250	130 - 210	3600	225
7	450	5X3	EHES 53250	127 - 203	3500	225
8	450	5X3	EHES 53250	131 - 209	3550	225
9	450	5X3	EHES 53250	135 - 215	3600	225
10	500	5X3	EHES 53250	124 - 203	3500	225
11	500	5X3	EHES 53250	128 - 208	3550	225
12	500	5X3	EHES 53250	132 - 214	3600	225
13	750	5X4	EHES 54200	119 - 137	3500	200
14	750	5X4	EHES 54200	123 - 141	3550	200
15	750	5X4	EHES 54200	126 - 145	3600	200
16	1000	6X4	EHES 64200	101 - 132	3500	200
17	1000	6X4	EHES 64200	104 - 136	3550	200
18	1000	6X4	EHES 64200	108 - 140	3600	200

Al Aman end suction pumps designed for 60-Hertz operation are engineered by qualified specialists using advanced manufacturing technology to deliver dependable, high-quality performance in demanding site conditions.

Each unit undergoes rigorous testing to ensure full compliance with international safety and performance standards. This focus on precision and durability guarantees reliable, long-term operation across diverse industrial and commercial applications.

↖ ↗ **CAPACITY:**
↙ ↘ **300 GPM to 1000 GPM**



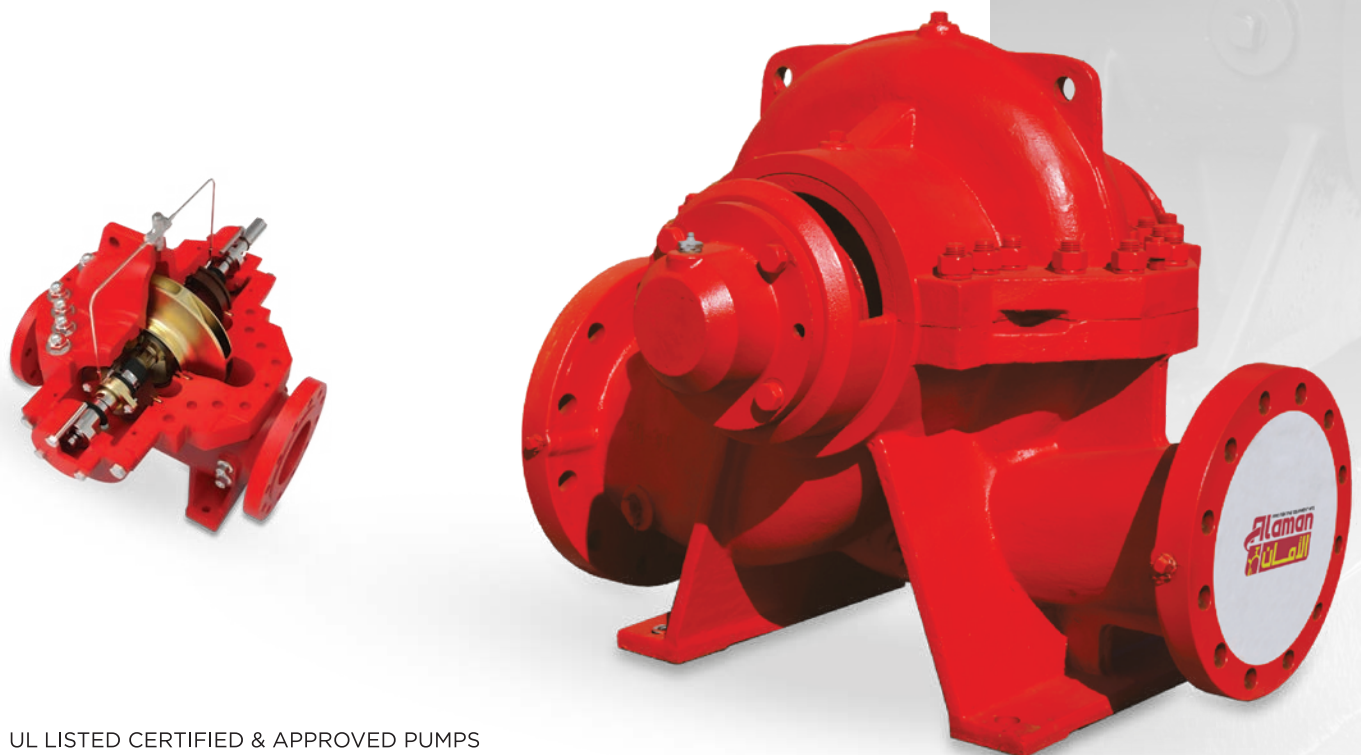
UL LISTED CERTIFIED & APPROVED PUMPS
Compliance to NFPA 20 Design Requirements

HORIZONTAL SPLIT-CASE FIRE PUMPS

SL No.	Rated Capacity, US GPM	Size, In.	Model	Pressure Rating, psi	Approx Speed RPM	Maximum Working Pressure Psi
1	450	6X4	ESF100-250	80-141	2900	232
2	450	6X4	ESF100-310	131-204	2900	290
3	450	6X4	ESF100-375	221-304	2900	400
4	500	6X4	ESF100-250	80-140	2900	232
5	500	6X4	ESF100-310	130-204	2900	290
6	500	6X4	ESF100-375	219-300	2900	400
7	750	6X4	ESF100-250	73-139	2900	232
8	750	6X4	ESF100-310	125-198	2900	290
9	750	6X4	ESF100-375	199-280	2900	400
10	1000	8X5	HSC125-290	100 - 181	2900	232
11	1250	8X5	HSC125-290	92 - 177	2900	232
12	1500	8X6	HSC150-290	99 - 156	2900	232
13	2000	8X6	HSC150-290	94 - 150	2900	232

Al Aman horizontal split-case fire pumps are designed in full compliance with UL 448 safety standards, ensuring certified operational safety and reliable performance. These pumps provide high flow rates, excellent efficiency, stable operation, low noise, and long service life. Engineered for ease of installation and maintenance, HSC pumps deliver dependable performance across a wide range of demanding fire protection and industrial applications.

↖ ↗ **CAPACITY**
 ↙ ↘ **450 GPM to 2000 GPM**



UL LISTED CERTIFIED & APPROVED PUMPS
 Compliance to NFPA 20 Design Requirements

VERTICAL TURBINE CENTRIFUGAL FIRE PUMPS

Model	Rated Capacity, US gpm	*Rated Net Pressure Range, psi		Stages	Discharge Size In.	Approx Speed, RPM
		Min.	Max.			
AM225 -80VT	50	96	224	3 to 6	5	2900
	100	94	218			
	150	94	215			
	200	92	213			
	250	90	209			
	300	86	202			
	50	99	232	3 to 6	5	2950
	100	98	226			
	150	97	223			
	200	95	220			
	250	93	217			
	300	90	210			
AM250 -14VT	100	119	256	3 to 6	6	2900
	200	114	246			
	250	112	242			
	300	110	237			
	400	103	221			
	500	95	208			
	100	123	265	3 to 6	6	2950
	200	118	254			
	250	116	251			
	300	114	246			
	400	107	229			
	500	100	217			
AM300 -25VT	300	130	329	3 to 6	8	2900
	400	126	324			
	450	124	319			
	500	122	317			
	750	109	291			
	1000	124	263			
	300	135	341	3 to 6	8	2950
	400	131	336			
	450	129	331			
	500	127	329			
	750	113	304			
	1000	129	273			

All Aman vertical turbine pumps are designed in accordance with NFPA 20 standards for fire protection. Ideal for underground water sources where the water level is below the pump room, the fully immersed impellers maintain prime at all times. These pumps are driven by vertical electric motors or diesel engines through a right-angle gearbox, ensuring reliable and efficient operation in demanding conditions.

↗ ↘ **CAPACITY:**
↙ ↕ **50 GPM to 1000 GPM**

UL LISTED CERTIFIED & APPROVED PUMPS
Compliance to NFPA 20 Design Requirements

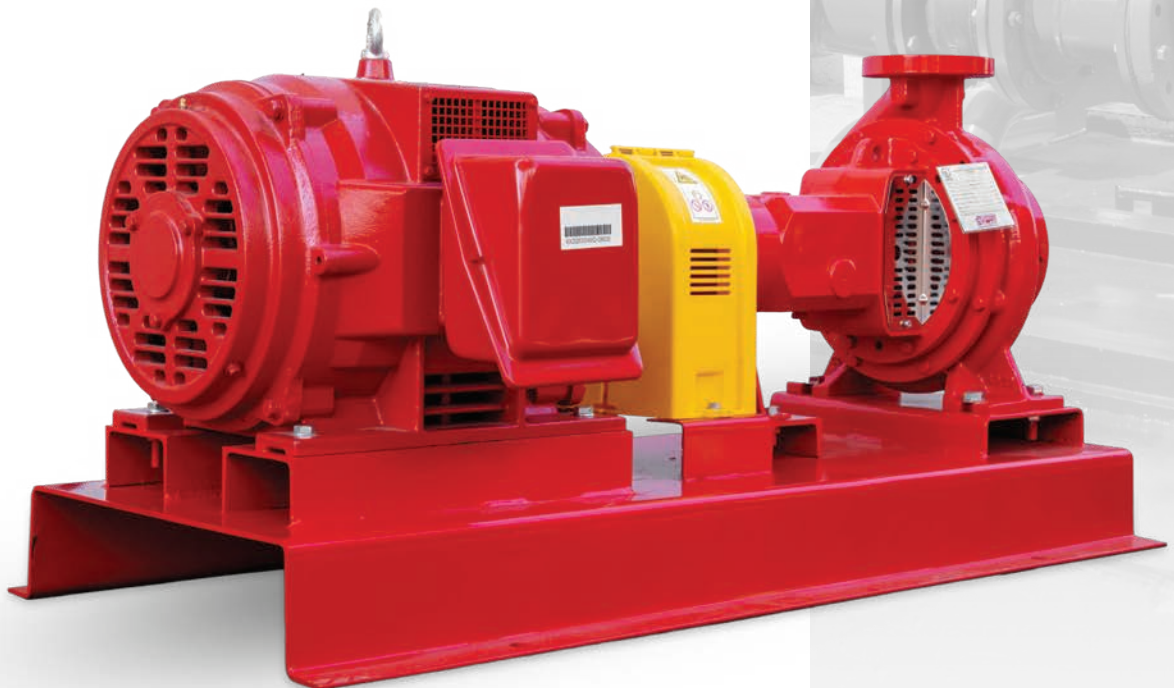


MOTOR DRIVEN SKIDS

Al Aman motor driven skids are engineered for reliable and efficient operation, driven by listed and approved fire pumps and electric motors. The skid packages are pre-tested, thoroughly inspected, and designed for compact installation while maintaining proper alignment and durability.

Features:

- Driven by listed and approved fire pumps and electric motors
- Well-aligned and coupled for direct operation
- Skid packages pre-tested and thoroughly inspected before release
- One-piece base plate with anchor bolt holes
- Engineered coated hot-rolled mild steel to resist corrosion and abrasion
- Heavy fabricated steel base plate ensuring proper pump and motor alignment
- Compact skid design with small footprint for retrofit applications
- High-quality materials, construction, finish, and workmanship



UL LISTED CERTIFIED & APPROVED PUMPS
Compliance to NFPA 20 Design Requirements

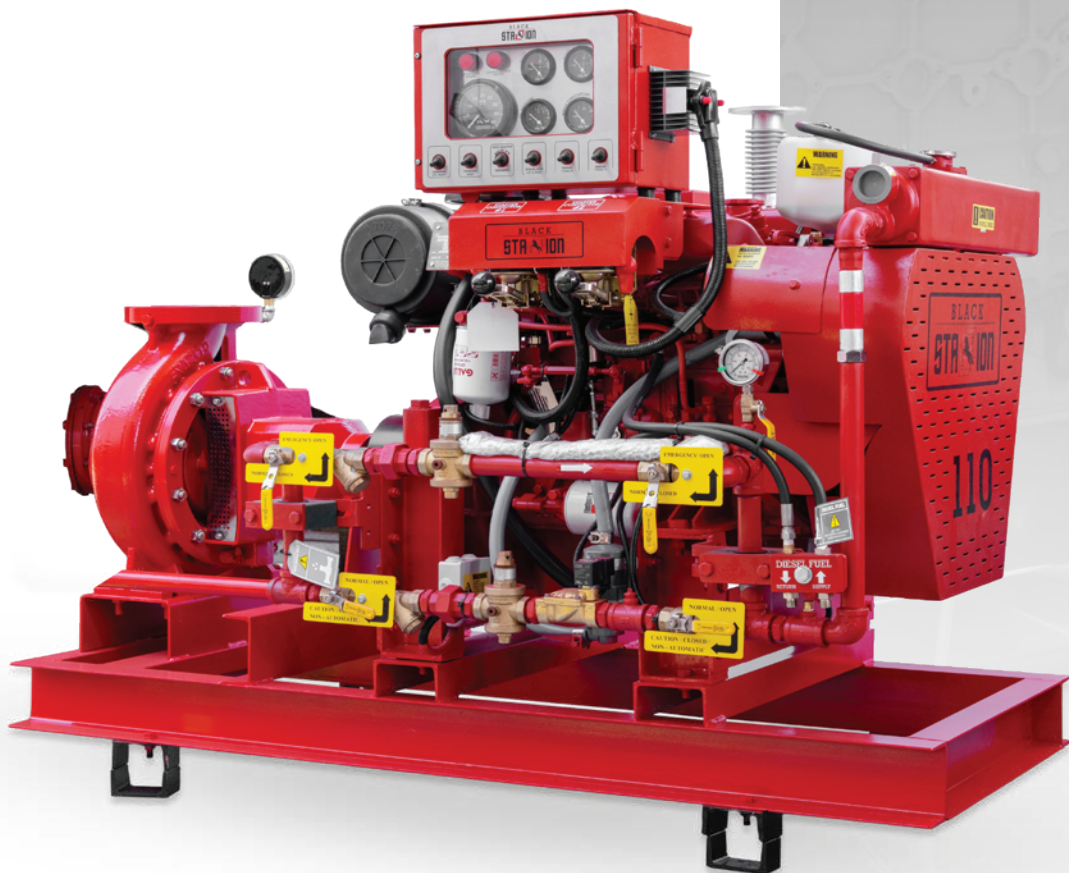
DIESEL DRIVEN SKIDS

Al Aman diesel driven skids are designed for reliable operation, powered by listed and approved fire pumps coupled with diesel engines.

Each skid package is carefully engineered, thoroughly inspected, and constructed to ensure proper alignment, durability, and compact installation for a variety of applications.

Features:

- Driven by listed and approved fire pumps and diesel engines
- Well-aligned and coupled for direct operation
- Skid packages thoroughly inspected before delivery
- One-piece base plate with anchor bolt holes
- Engineered coated hot-rolled mild steel to resist corrosion and abrasion
- Heavy fabricated C-channel structure for proper pump and diesel engine alignment
- Compact skid design with small footprint for retrofit applications
- High-quality materials, construction, finish, and workmanship



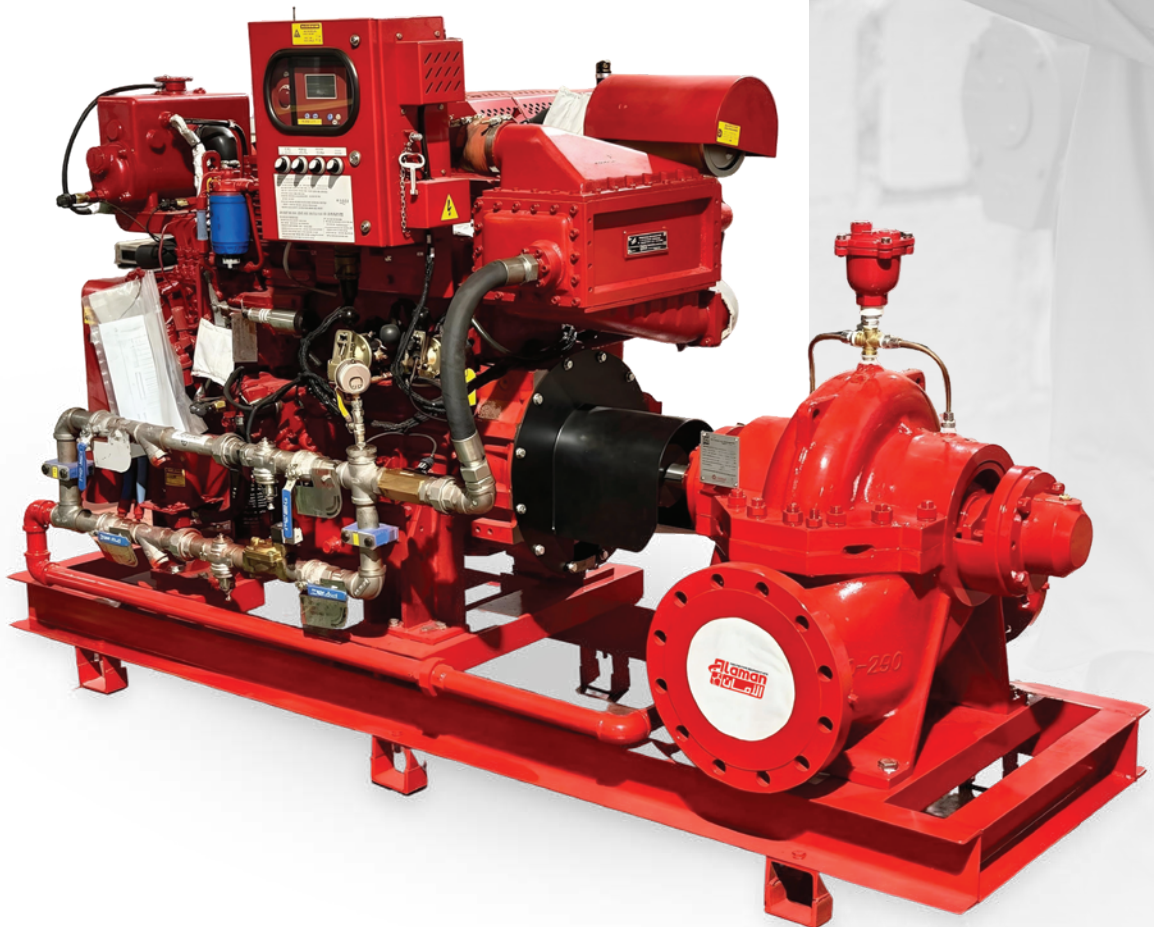
UL LISTED CERTIFIED & APPROVED PUMPS
Compliance to NFPA 20 Design Requirements

HORIZONTAL SPLIT CASE DIESEL DRIVEN SKIDS

Al Aman horizontal split case diesel driven skids are designed for reliable operation, powered by listed and approved horizontal split case fire pumps coupled with diesel engines. Each skid package is carefully engineered, thoroughly inspected, and constructed to ensure proper alignment, durability, and compact installation for a variety of applications.

Features:

- Driven by listed and approved horizontal split case fire pumps and diesel engines
- Well-aligned and coupled for direct operation
- Skid packages thoroughly inspected before delivery
- One-piece base plate with anchor bolt holes
- Engineered coated hot-rolled mild steel to resist corrosion and abrasion
- Heavy fabricated C-channel structure for proper pump and diesel engine alignment
- Compact skid design with small footprint for retrofit applications
- High-quality materials, construction, finish, and workmanship



UL LISTED CERTIFIED & APPROVED PUMPS
Compliance to NFPA 20 Design Requirements

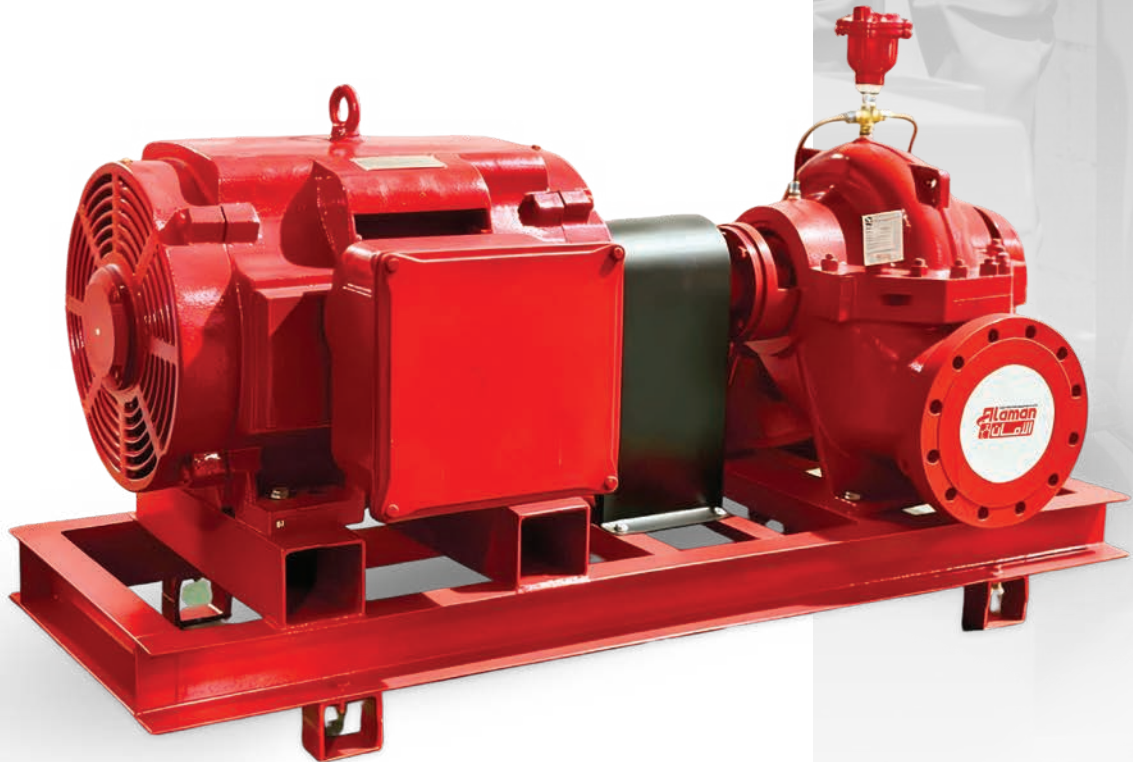
MOTOR HORIZONTAL SPLIT CASE SKIDS

Al Aman horizontal split case skids are engineered for reliable and operation, driven by listed and approved fire pumps and electric motors.

The skid packages are pre-tested, thoroughly inspected, and designed for compact installation while maintaining proper alignment and durability.

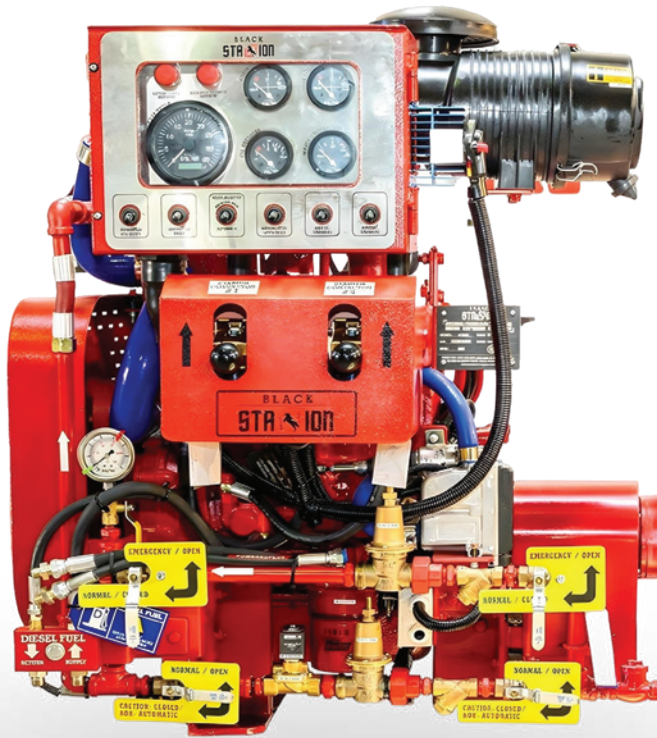
Features:

- Designed for listed split case fire pumps and motors electric
- Well-aligned and coupled for smooth operation
- Skid packages pre-tested and thoroughly inspected before release
- One-piece base plate with anchor bolt holes
- Engineered coated hot-rolled mild steel to resist corrosion and abrasion
- Heavy fabricated steel base plate ensuring proper pump and motor alignment
- Compact skid design with small footprint for retrofit applications
- High-quality materials, construction, finish, and workmanship



UL LISTED CERTIFIED & APPROVED PUMPS
Compliance to NFPA 20 Design Requirements

DIESEL ENGINE VERTICAL TURBINE



Al Aman diesel engine vertical turbine pump features multiple centrifugal impellers, guide housings, water pipes, drive shafts, pump bases, gearboxes, diesel engine assemblies, control cabinets, and other components.

With the pump base, gearbox, and diesel engine assembly located above the wellhead, power is transmitted through the concentric gearbox and water pipe to the impeller shaft, generating reliable flow and pressure for demanding industrial and fire protection applications.

UL LISTED CERTIFIED & APPROVED PUMPS
Compliance to NFPA 20 Design Requirements

PUMP HOUSE

Al Aman provides fully packaged, NFPA20- compliant fire-fighting pumping solutions in containerized units or custom-built pump houses. Each system includes factory-installed fire pumps, jockey pumps, controllers, piping, and electrical connections within fire-rated, weatherproof enclosures.

Designed to international standards and factory-tested, these UL and NFPA20 Compliant systems ensure reliable performance, easy installation, and simplified maintenance, requiring only external power and piping connections at site.

Operating Range

Flow: Up to 2000 GPM

Pressure: 6 BAR to 21 BAR

Available Configurations

Container Sizes: 20ft & 40ft (Standard and High Cube)

Pump Houses: Custom-built

Certifications: UL/NFPA20 Standard



UL LISTED CERTIFIED & APPROVED PUMPS
Compliance to NFPA 20 Design Requirements

FIRE PUMP CONTROLLERS

Fire pump controllers are factory-assembled, wired, and fully tested to ensure reliable operation.

Designed in compliance with the latest NFPA-20 (Centrifugal Fire Pumps) standards, these controllers provide safe and dependable fire pump management across a variety of applications.

Features:

- Factory-assembled, wired, and tested as a complete unit
- Compliant with NFPA-20 standards
- Approved by UL and FM
- Suitable for centrifugal fire pump systems in commercial and industrial installations



JOCKEY PUMPS

Al Aman jockey pumps are compact, motor-driven units designed to operate in conjunction with main fire pumps within fire protection systems.

Their primary function is to maintain system pressure during standby conditions and automatically compensate for small pressure losses caused by minor leaks or temperature variations.

By handling routine pressure maintenance, jockey pumps prevent frequent starting of the main fire pump, thereby reducing mechanical stress, electrical load, and overall wear on the main pump and its controller. This contributes to improved reliability and extended service life of the complete fire pump system.

Al Aman jockey pumps are engineered for reliable, efficient, and continuous operation, ensuring the fire protection system remains pressurized and ready for immediate response at all times.

The pumps are supplied with compatible controllers and are suitable for a wide range of commercial, industrial, and residential fire protection applications.

Key Features:

- Compact, motor-driven pumps for maintaining system pressure
- Automatically compensates for minor leaks and pressure fluctuations
- Minimizes unnecessary operation of main fire pumps
- Enhances reliability and extends service life of the fire pump system
- Controllers available for across-the-line starting
- Efficient, reliable, and continuous standby pressure maintenance



PORTABLE EXTINGUISHERS

We offer a full range of CO², Wet Chemical, Water, Foam, and Dry Powder extinguishers—Providing the right solution for every fire class. Built for reliability and ease of use, each unit is available in multiple sizes to suit your safety requirements.

Key Features

- **Durable Construction:** Strong steel cylinders with anti-corrosive polyester coating for long-lasting performance.
- **Premium Components:** Equipped with robust brass valves for added reliability.
- **Ready to Use:** Pre-filled with your choice of ABC Dry Powder, Foam, CO², Water, or Wet Chemical agents
- **Easy Operation:** Designed for fast, simple, one-person use in emergencies. Engineered with safety, quality, and user-friendly handling in mind.

	CAPACITY
POWDER	1 Kg - 2 Kg - 4 Kg - 6 Kg - 9 Kg - 12 Kg
CO ²	2 Kg - 5 Kg
FOAM	3 Ltr - 6 Ltr - 9 Ltr
WATER	3 Ltr - 6 Ltr - 9 Ltr
WET CHEMICAL	3 Ltr - 6 Ltr - 9 Ltr



MOBILE EXTINGUISHERS

Mobile Fire Extinguishers deliver high-capacity fire protection for warehouses, factories, fuel areas, and other high-risk sites. Designed for easy maneuverability, they provide powerful, reliable suppression where larger coverage is needed.

Product Features

- **High-Capacity Performance:** Extended discharge time for demanding fire situations.
- **Easy Mobility:** Heavy-duty wheels and stable chassis for quick positioning.
- **Durable Construction:** Strong steel cylinders with corrosion-resistant coating.
- **Premium Components:** Fitted with reliable brass valves and quality hoses.
- **Ready to Use:** ABC Dry Powder, Foam, CO², Water.

Built for strength, efficiency, and smooth handling in large or high-hazard environments.

	CAPACITY
POWDER	25 Kg - 50 Kg - 75 Kg - 100 Kg
CO ²	10 Kg - 20 Kg - 30 Kg
FOAM	25 Ltr - 50 Ltr - 75 Ltr - 100 Ltr
WATER	25 Ltr - 50 Ltr - 75 Ltr - 100 Ltr



FIRE FIGHTING SINGLE DOOR CABINETS

Al Aman fire cabinets are manufactured in accordance with ISO 9001 quality management standards, ensuring durability, safety, and aesthetic appeal. The cabinets can be custom-fabricated from stainless steel, painted galvanized steel. Designed to accommodate firefighting equipment such as hose reels, fire hoses, landing valves, and extinguishers.



FIRE FIGHTING SINGLE DOOR CABINET	
Dimension	800 (W) x 800 (H) x 300 (D) mm
Material	Stainless Steel / GI
Thickness	1 mm to 1.2 mm
Installation	Surface type, Recessed type, with glass/without glass
Paint Finish	Red Powder Coated / Mirror or Brush Finish



FIRE FIGHTING SINGLE DOOR BREACHING INLET CABINET	
Dimension	60 (W) x 60 (H) x 30 (D) mm 4-ways breaching inlet 60 (W) x 40 (H) x 30 (D) mm 2-ways breaching inlet
Material	Stainless Steel / GI
Thickness	1 mm to 1.2 mm
Installation	Surface type, Recessed type, with glass/without glass
Paint Finish	Red Powder Coated / Mirror or Brush Finish



FIRE FIGHTING DOUBLE DOOR CABINETS

Al Aman double fire cabinets are manufactured in accordance with ISO 9001 quality management standards, ensuring durability, safety, and an enhanced professional appearance.

These cabinets are custom-fabricated from stainless steel, painted galvanized steel in varying thicknesses to meet project requirements.

The double-compartment design provides increased storage capacity and is specifically engineered to accommodate multiple firefighting equipment such as hose reels, fire hoses, landing valves, extinguishers, and related accessories.



FIRE FIGHTING DOUBLE DOOR CABINET	
Dimension	800 (W) x 1600 (H) x 300 (D) mm
Material	Stainless Steel / GI
Thickness	1 mm to 1.2 mm
Installation	Surface type, Recessed type, with glass/without glass
Paint Finish	Red Powder Coated / Mirror or Brush Finish
Hinges	Push Pin, Piano Hinges Stainless Steel
Door Handle	Chrome plated

DOUBLE DOOR HORIZONTAL FIRE HOSE REEL CABINET WITH EXTINGUISHER	
Dimension	110 (W) x 80 (H) x 30 (D) mm
Material	Stainless Steel / GI
Thickness	1 mm to 1.2 mm
Installation	Surface type, Recessed type, with glass/without glass
Paint Finish	Red Powder Coated / Mirror or Brush Finish
Hinges	Push Pin, Piano Hinges Stainless Steel
Door Handle	Chrome plated



FIRE HYDRANTS UL

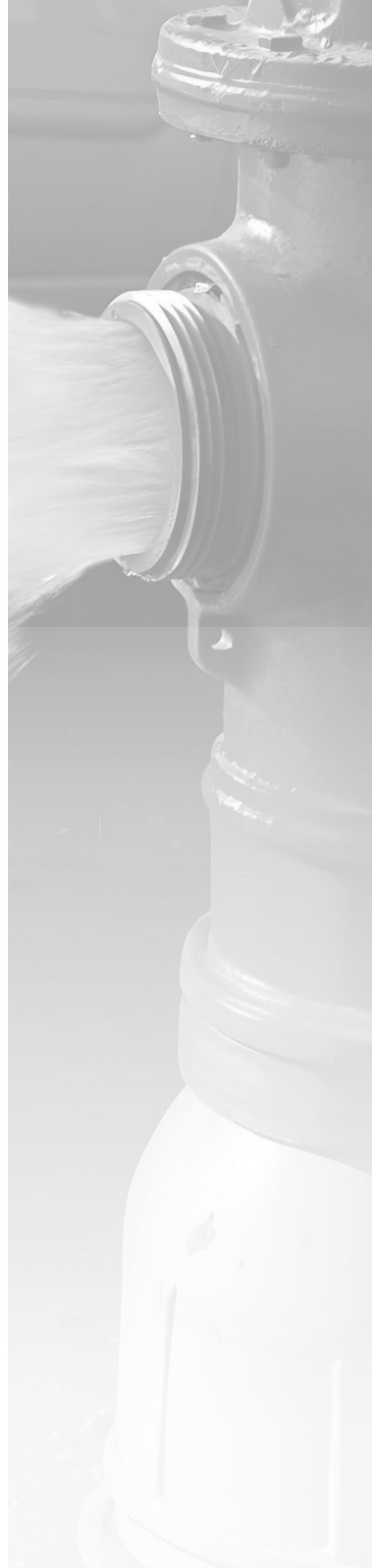
Al Aman fire hydrants provide a reliable connection point for firefighters to access water during fire emergencies. Engineered to withstand high-pressure water, these hydrants are manufactured in compliance with NFPA standards, ensuring durability and optimal performance under demanding conditions. Each hydrant includes high-threaded brass outlets to facilitate rapid hose connection and efficient firefighting.

Features:

- Compliant with NFPA standards for fire protection
- Two high-threaded brass outlets for hose connection
- Designed to withstand high water pressure
- Minimum flow rate of approximately 250 gallons per minute
- Available in wet type and dry type configurations
- Sizes available in 4” and 6” as per customer requirements
- Durable construction for reliable firefighting performance

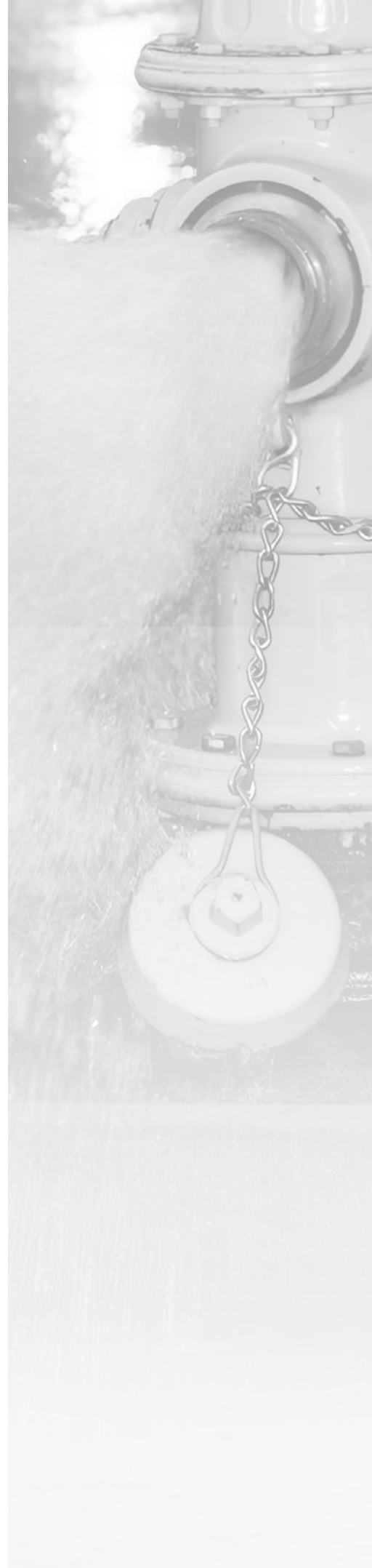
Design Standard	FM 1511/UL 246/AWWA C503
Nozzle Standard	NFPA 1963
Monitor Flange	Size: 4"-ANSI Class125
Pipe Flange	Size: 6"-ANSI Class125
Working Pressure	250PSI

Model No.	Hose Nozzle	Pumper Nozzle	Monitor Flange	Pipe Flange
FKWH15-2HIP	2-1/2" *2	4" or 4-1/2" Pumper Connection *1	--	6"



FIRE HYDRANTS

MODEL	BODY MATERIAL	OUTLET	INLET	WORKING / TEST PRESSURE
Wet Type Fire Hydrant	Cast Iron-BS 1450 / BS 750	2 1/2" Brass landing valves	4" ANSI b flange	15 Bar / 30 Bar
Wet Fire Hydrant Monitor Type	Mild Steel	2 1/2" Landing valve oblique type with female instantaneous connection, 3 inch outlet flange with monitor connection	6" 150 # Raised face weld-neck flange schedule 40 (STD) Carbon Steel	10 Bar / 20 Bar
Wet Type Fire Hydrant	Mild Steel	2 1/2" Landing valve oblique type with female instantaneous connection	6" 150 # Raised face weld-neck flange schedule 40 (STD) Carbon Steel	10 Bar / 20 Bar
Wet Fire Hydrant With Pumper Connection	Mild Steel	2 1/2" Landing valve oblique type with female instantaneous connection, 4 inch outlet flange with butterfly valve and 4 inch bsrt thread connection	6" 150 # Raised face weld-neck flange schedule 40 (STD) Carbon Steel	10 Bar / 20 Bar



FOAM TRAILER

Al Aman foam trailer unit is equipped with a diesel engine-driven pump and a toolbox on the sides for storing fire hoses and accessories.

Designed for flexibility, the container and pump sizes can be customized according to client requirements, ensuring optimal performance in various firefighting scenarios.

Features:

- Diesel engine-driven pump for reliable operation
- Side toolboxes for fire hose and accessories
- Customizable container and pump sizes to meet client specifications





FOAM CONCENTRATES

Al Aman provides a comprehensive range of foam solutions for extinguishing flammable liquids across industries such as Oil & Gas, Chemical, Pharmaceutical, and heavy industries. Foam selection—AFFF, AFFF-AR, AFFF-FP or synthetic—is based on the type of liquid fuel to ensure effective fire suppression.

Features:

- Suitable for various flammable liquids and chemical fires
- Foam types include AFFF, AFFF-AR, AFFF-FP and synthetic foam
- Tailored solutions for different industrial sectors
- High performance and compliance with quality standards

FOAM MASTER

Al Aman Foam Master 150 Ltr is designed for rapid deployment to combat flammable liquid fires and chemical spills. The foam tank is made of durable fiberglass, externally powder-coated in yellow, and can be safely operated by a single technician, providing an efficient and reliable firefighting solution.

Features:

- 150 Ltr fiberglass foam tank
- Externally powder-coated (yellow) for durability and visibility
- Suitable for flammable liquid fires and chemical spills
- Can be operated by a single technician for rapid response

FOAM CHAMBER

Foam chamber is used in one of the most common applications to protect vertical fixed roof (cone) liquid storage tanks, with or without internal floating roof with the low expansion foam system.

The application of foam is on the basis that the risk comprises the total surface area of the fuel. The foam system design guidelines generally used are in accordance with NFPA-11 standard. Foam Chambers are defined by NFPA-11 as Type II discharge outlets for delivering foam to the surface of a flammable liquid. Foam Chambers are widely used with the Balance Pressure Foam Proportioning System, Bladder Tank Proportioner or Foam Tender.

FOAM CABINET

Al Aman Foam Cabinet is high-performance fire protection system designed for rapid response to Class A and B fires. Its ergonomic design allows easy operation by a single user, making it ideal for industrial and commercial fire safety applications.

Key Features

- High extinguishing efficiency for Fire Classes A & B
- Ergonomic design for single-operator use
- Suitable for gas stations, petrochemical plants, industrial facilities, and warehouses
- Reliable protection for areas with increased fire risk



DELUGE VALVES

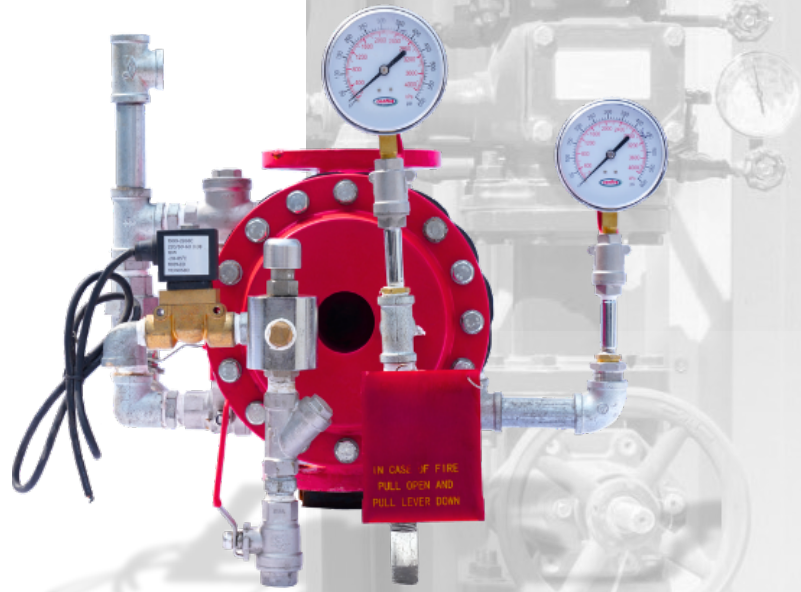


Al Aman deluge valves, also known as system control valves, are key components in deluge fire protection systems. They allow for instant application of water or water-foam mixtures in spray systems, protecting critical areas such as power transformers, storage tanks, conveyors, aircraft hangars, and flammable liquid hazards. Various trim options are available to meet specific operational requirements.

Features:

- System control valve for deluge fire protection systems
- Instant water application for rapid fire suppression
- Supports addition of foaming agents for flammable liquid fires
- Protects power transformers, storage tanks, conveyors, aircraft hangars, and industrial applications
- Multiple trim options: electric trim, wet pilot trim, dry pilot trim, and other combinations
- Reliable, durable, and compliant with industrial fire protection standards

↖ ↗ SIZE
↙ ↘ 2-6 inch



WET ALARM CHECK VALVES (DN80-DN250)



Al Aman wet alarm check valves are designed for use in wet pipe fire protection systems, providing reliable non-return operation while enabling hydraulic fire alarm signaling independent of electrical power. These valves help ensure system integrity and timely fire notification in various commercial and industrial applications.

Features:

- Prevents reverse flow of water (non-return function)
- Provides hydraulic fire alarm operation independent of electrical power
- Hydraulic retard chamber for time delay to avoid false alarms
- Optional use with electrical supplemental alarms and annunciators
- Suitable for DN80 to DN250 pipe sizes
- Reliable and durable for wet pipe fire protection systems

↖ ↗ SIZE
↙ ↘ 2-6 inch



SPRINKLERS

Standard Spray, Standard /Quick Response, 5/3 mm Bulb Type K5.6 ½» Connection Thread

The FF023 / FF024 Standard / Quick Response Upright and FF025 / FF026 Standard / Quick Repose pendent sprinlers (Ref. Figure A) are automatic sprinlers of the frangible bulb type.

They are “standard/quick response - standard orifice spray sprinler” intended for use in fire sprinler systems designed in accordance with the standard installation rules recognized by the applicable Listing or Approval agency (e.g., UL Listing is basel on NFPA 13 requirements). The Upright, Pendent Sprinklers all produce a hemispherical water distribution pattern below the deflector.

Sprinler Operation

During a fire conditions, the thermal-sensitive liquid in the glass bulb expands, causing the bulb to shatter, releasing the button and spring seal assembly. Water flowing through the springler orifice strikes the sprinler deflector. forming a uniform spray pattern to extinguish or control the fire.

Coverage

For coverage area and sprinler placement refer to NFPA13 standards.



FIRE FIGHTING HOSE REEL

Al Aman fixed-type hose reel is equipped with an automatic or manual stop valve, designed for reliable use in office buildings, schools, hotels, hospitals, airports, sports arenas, cinemas, and shopping centres.

It provides safe and efficient operation for firefighting applications.

Features:

- Hose reel with side discs, powder-coated RAL 3000 red
- Integrated automatic stop/manual valve
- Jet/spray/shut-off nozzle
- Red hose approved to BS EN 694 for fire hose reels
- Wall-mounting bracket
- Roller hose guide allowing hose deployment in any direction
- Centre parts made of brass
- Installation instructions included

Model No.	Hose Length	Valve	Disk sizes/distance
FKSA19	19mm x 30m	Swinging, automatic, wall mounted	555mm x 140mm
FKSM19	19mm x 30m	Swinging, manual, wall mounted	555mm x 140mm
FKSA25	25mm x 30m	Swinging, automatic, wall mounted	555mm x 170mm
FKSM25	25mm x 30m	Swinging, manual, wall mounted	555mm x 170mm



The hose reels are tested, approved and marked according to BS EN1:2012-671

SYNTHETIC FIRE HOSE

Al Aman synthetic fire hoses are designed to deliver water or foam to extinguish fires efficiently. Available in single-jacket and double-jacket constructions, these hoses combine durability, flexibility, and high-pressure performance to meet the demands of modern firefighting operations.

Features:

- Available in single-jacket and double-jacket options
- Suitable for transporting water or foam for fire suppression
- High-pressure capability for effective firefighting
- Available in a range of lengths and diameters to suit different applications
- Durable and flexible for ease of handling and deployment

Model	Description	Size	Colour	Working Pressure
FTH-Lexus (I)	NBR/PVC lining and cover Reinforcement Spun Polyester	1.5" (UL listed) 2.5" (UL listed)	Red	200PSI
FTH-17-65 (II)	TPU Lining, Polyester Single Jacket	1.5"(UL listed on-going) 2.5" (UL listed)	White/Red	250PSI
FTH-28-65 (II)	EPDM lining, Polyester Double Jacket	1.5"(UL listed on-going) 2.5"(UL listed)	White/Red/ Orange	400PSI



BREECHING INLET



Al Aman breaching inlets are key components of standpipe systems, providing a direct connection between the water supply and fire hoses. Acting as an extension of the fire hydrant system, they deliver a pre-piped water source for building occupants or the fire department, enabling rapid and efficient firefighting operations.

Features:

- Connects standpipe system to building water supply
- Acts as an extension of the fire hydrant system
- Provides a pre-piped water source for rapid firefighting
- Supports both building occupants and fire department operations
- Durable construction for reliable and long-lasting performance



2-way breaching inlet



4-way breaching inlet

LANDING VALVES



Al Aman landing valves provide reliable connection points in fire protection systems, allowing firefighters to access water efficiently for extinguishing fires. Designed for versatility and durability, these valves are suitable for a wide range of commercial and industrial applications.



Oblique Landing Valve Threaded



Flanged Oblique Landing Valve



Bib-nose Flanged Type Valve



Bib-nose Screw Type Valve



BLADDER TANK

The Fireking Bladder Tank is an component of a balanced pressure proportioning system. The Fireking Bladder Tank require only a pressurized water supply for operation. No other external power is required. This can be used with one or more Fireking Proportioner and any suitable discharge device to create a complete the foam system. Fireking Bladder Tank Type Foam Proportioning Unit (Bladder Tank) is provided for accurate foam proportioning of the foam concentrate with the fire water over a wide range of flow. Fireking Bladder Tank have numerous applications at various locations including aircraft hangars, foam water sprinkler systems, truck loading racks, and helipads

- ↖ ↗ **CAPACITY VERTICAL**
37L - 3000 GALLONS
- ↙ ↘ **CAPACITY HORIZONTAL**
37L - 4000 GALLONS



FIRE PROTECTION VALVES

Fire Protection Valves are components that manage the flow and supply of water system within the unit and it is an integral component maintain adequate flow and pressure.

Al Aman offers the complete selection of fire product valve for your project requirements.

- OS&Y Gate Valve
- NRS Gate Valve
- Check Valve
- Butterfly Valve
- Strainers



FIRE BLANKET

- Excellent fire proof
- Heat resistance and insulation properties
- Effectively eliminates air and absorbs heat to suppress fire immediately.

Application

Mainly equipped for the kitchen, smother fire caused by overheated oil in cooking, Also it can be equipped in the transportation mediums, warehouses and oil stations. Can effectively put out small fires and can be wrapped around bodies during fire exposure and reduce evacuation time.

Model	Size
FKFB44	4'X4'(1.2M X 1.2M)
FKFB64	6'X4'(1.8M X 1.2M)
FKFB66	6'X6'(1.8M X 1.8M)



FIRE RESISTANT ALARM CABLE

Screened two core fire rate cable suitable for Fire Protection Systems Standards EN50200

Technical Overview

Rating Temperatur 90 °C

Rating Voltage 100V

Design	Bared Solid Pure Copper Wire
Conductor	Ceramic Silicone Rubber
Insulation	Fire Resistance Tape
Wrapping tape	Bared Copper Wire
Drain Wire (if applicable)	Aluminum Foil
Screen (if applicable)	LSZH
6.Sheath Material	Red/White
Standard Put Up Length	300m/100m
Package	Wood drum and pallet, or Plastic reel with Carton

Part no.	Sizes	Conductor (mm)	Approx. Insulation Diameter (mm)	Drain Wire (mm)	Approx. Outer Diameter(mm)
XH21 OS	2X1.0mm ²	1.13±0.02	2.3	1/0.5BC	6.5
XH21 5S	2X1.5mm ²	1.38±0.03	2.6	1/0.5BC	7.0
XH22 5S	2X2.5mm ²	1.78±0.04	3.0	1/0.5BC	8.2

FIRE RATING
120 Minutes



FILLING MACHINES

CO2 FILLING MACHINE

FKCO2FM carbon dioxide is used with water pressure. It fills carbon dioxide extinguishing agent into various portable type of carbon dioxide fire extinguishers automatically or semi automatically.

It consists of the thermostatic system, console, electric scale, etc. and it has advantages of safety and reliability, convenient operation, accurate filing volume, high work efficiency.

It is the ideal filling equipment for firefighting equipment manufactures and repairs.



DRY POWDER FILLING MACHINE

Dry powder filling machine is compatible to fill portable and trolley type fire extinguishers by adopting vacuum fluidics filling machine sucks dry powder into the powder holder and fill it in the container.

This machine is compact, movable, and easy to operate and pollution free.

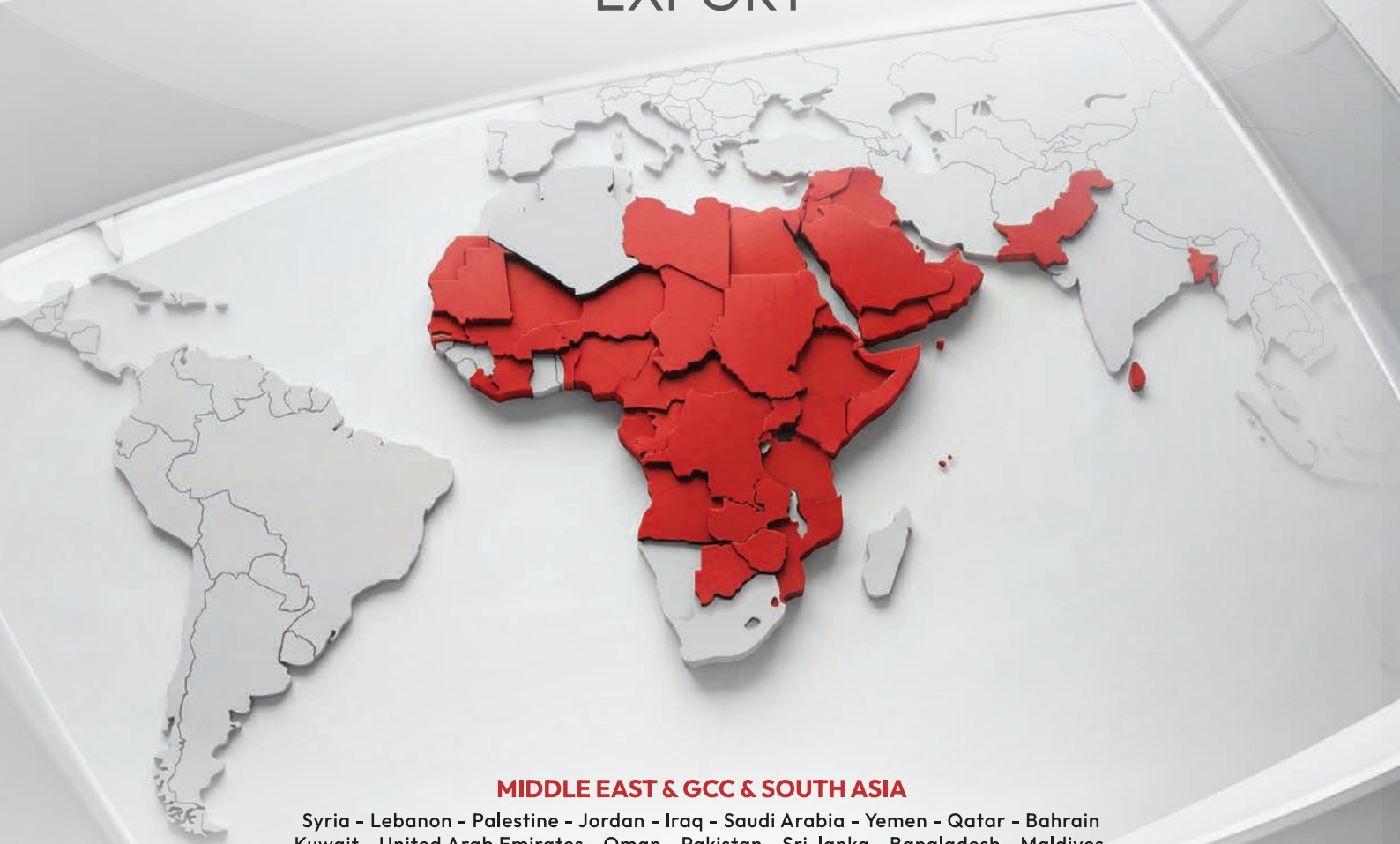
It can recycle dry powder in the free extinguisher directly thus reducing labor intensity and improving working environment.

This machine is particularly applicable to the filling of dry powder fire extinguisher. And is also applicable to the filling of various powder products





GLOBAL EXPORT



MIDDLE EAST & GCC & SOUTH ASIA

Syria - Lebanon - Palestine - Jordan - Iraq - Saudi Arabia - Yemen - Qatar - Bahrain
Kuwait - United Arab Emirates - Oman - Pakistan - Sri-lanka - Bangladesh - Maldives

AFRICA

Libya - Egypt - Western Sahara - Mauritania - Mali - Niger - Nigeria - Chad - Kenya - Somalia - Sudan
South Sudan - Eriterea - Djibouti - Uganda - Kigali - Congo - Gabon - Cameroon - Benin - Cote Divoire - Liberia - Rwanda
Senegal - Burkina Faso - Angola - Zambia - Zimbabwe - Mozambique - Botswana - Tanzania - Ethiopia - Seychelles



+971 4 258 0090
DUBAI - UAE

info@amanfire.com - www.amanfire.com