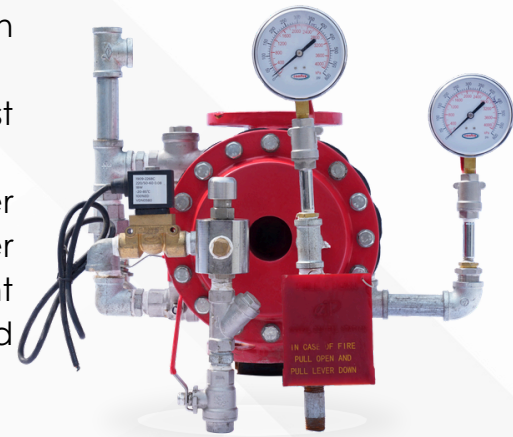


DELUGE VALVE

TECHNICAL DESCRIPTION

- FireKing Deluge Valve is known as a system control valve in a deluge system with various trim options like Electric trim, or Wet pilot trim, or dry pilot trim or any other combination available.
- The system control valve in a deluge system, used for fast application of water in a spray system.
- Deluge valve protects areas such as power transformer installation, storage tank, conveyor protection and other industrial application etc. With the addition of foaming agent deluge valve can be used to protect aircraft hangar and inflammable liquid fire



TECHNICAL SPECIFICATIONS

1. fast application of water in spray, pre-action and foam system.
2. cast steel astm a216 wcb construction.
3. size: 50, 80, 100, 150 & 200 mm (2", 3", 4", 6" & 8").
4. maximum service pressure 17.5 bar (250 psi).
5. horizontal or vertical installation.
6. bronze seat.
7. flanged connection dimensions to ansi b 16.5.
8. no latch, no piston, no hinges.
9. simple yet rugged.
10. diaphragm operated with rubber to metal drip-tight positive sealing.
11. auto-reset type.
12. service without removal from line.
13. easily trimmed for actuation by manual, remote solenoid valve & with wet or dry pilot. internal and external surfaces epoxy coated for extra protection.